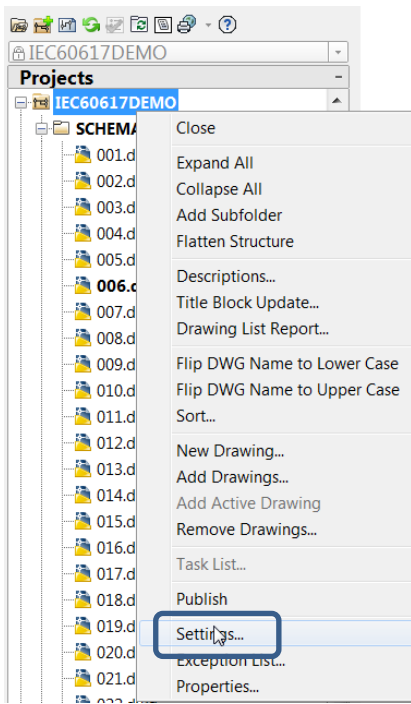


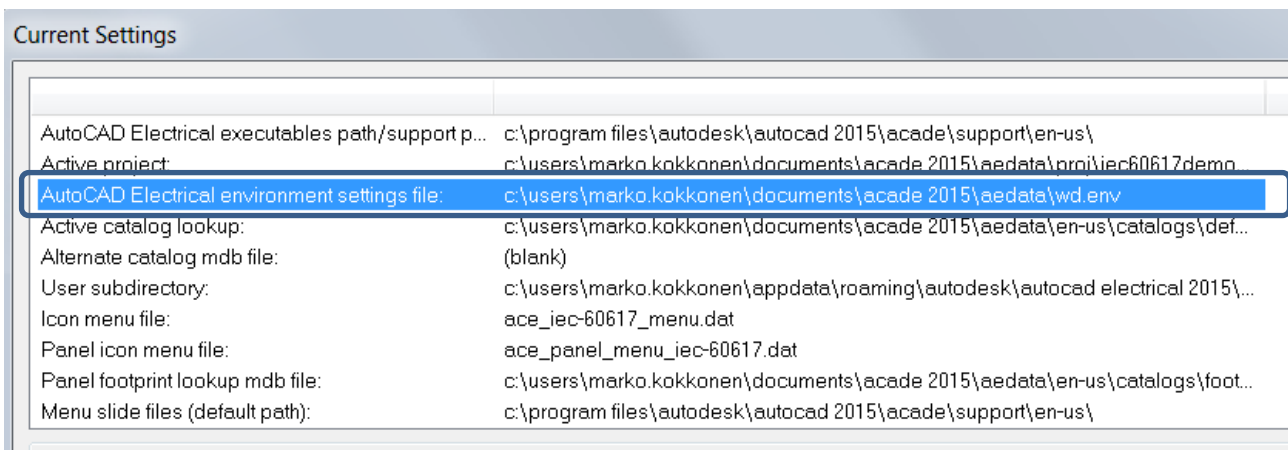
## AutoCAD Electrical - Oletusprojektihakemiston muuttaminen

Mikäli et tiedä ympäristömuuttujatiedoston *wd.env* sijaintia voit tarkastaa sen seuraavasti:

Valitse projektin lisävalikosta Settings:

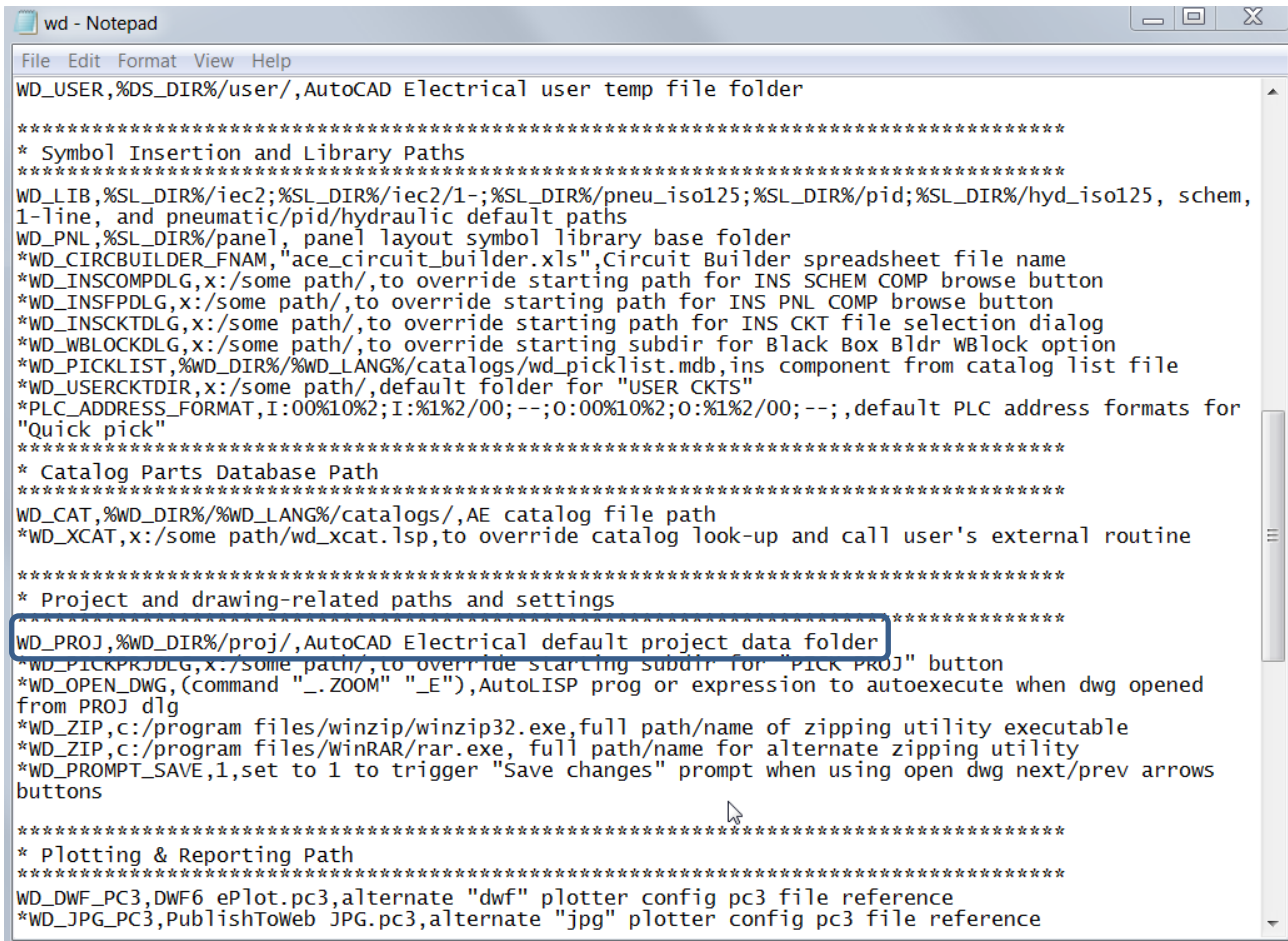


Wd.env tiedoston sijainti esitetään ilmestyvässä Current Setting -ikkunassa.



Avaa wd.env tiedosto tekstieditorilla (esim. Notepad).

Siirry kohtaan missä määritetään projektipolku



```
wd - Notepad
File Edit Format View Help
WD_USER,%DS_DIR%/user/,AutoCAD Electrical user temp file folder

*****
* Symbol Insertion and Library Paths
*****
WD_LIB,%SL_DIR%/iec2;%SL_DIR%/iec2/1-;%SL_DIR%/pneu_iso125;%SL_DIR%/pid;%SL_DIR%/hyd_iso125, schem,
1-line, and pneumatic/pid/hydraulic default paths
WD_PNL,%SL_DIR%/panel, panel layout symbol library base folder
*WD_CIRCBUILDER_FNAM,"ace_circuit_builder.xls",Circuit Builder spreadsheet file name
*WD_INSCOMPDLG,x:/some path/,to override starting path for INS SCHEM COMP browse button
*WD_INSFDPDLG,x:/some path/,to override starting path for INS PNL COMP browse button
*WD_INSCKTDLG,x:/some path/,to override starting path for INS CKT file selection dialog
*WD_WBLOCKDLG,x:/some path/,to override starting subdir for Black Box Bldr WBlock option
*WD_PICKLIST,%WD_DIR%/catalogs/wd_picklist.mdb,ins component from catalog list file
*WD_USERCKTDIR,x:/some path/,default folder for "USER CKTS"
*PLC_ADDRESS_FORMAT,I:00%10%2;I:%1%2/00;--;0:00%10%2;0:%1%2/00;--,default PLC address formats for
"Quick pick"
*****
* Catalog Parts Database Path
*****
WD_CAT,%WD_DIR%/catalogs/AE catalog file path
*WD_XCAT,x:/some path/wd_xcat.lsp,to override catalog look-up and call user's external routine

*****
* Project and drawing-related paths and settings
*****
WD_PROJ,%WD_DIR%/proj/,AutoCAD Electrical default project data folder
*WD_PICKPKJDLG,x:/some path/,to override starting subdir for "PICK PROJ" button
*WD_OPEN_DWG,{command "_ZOOM" "_E"},AutoLISP prog or expression to autoexecute when dwg opened
from PROJ dlg
*WD_ZIP,c:/program files/winzip/winzip32.exe,full path/name of zipping utility executable
*WD_ZIP,c:/program files/winRAR/rar.exe,full path/name for alternate zipping utility
*WD_PROMPT_SAVE,1,set to 1 to trigger "Save changes" prompt when using open dwg next/prev arrows
buttons

*****
* Plotting & Reporting Path
*****
WD_DWF_PC3,DWF6 ePlot.pc3,alternate "dwf" plotter config pc3 file reference
*WD_JPG_PC3,PublishToWeb JPG.pc3,alternate "jpg" plotter config pc3 file reference
```

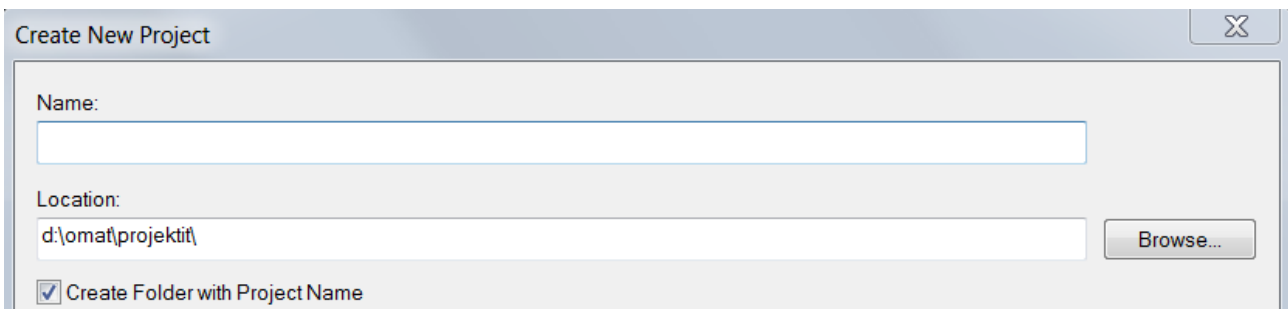
Haluat että uusi oletushakemisto projekteille on tässä tapauksessa D:\omat\projektit.

Lisää uusi polku pilkkujen väliselle osuudelle:

WD\_PROJ, D:/omat/projektit/,AutoCAD Electrical default project data folder.

Tallenna wd.env tiedosto ja sulje se.

AutoCAD Electrical käyttää nyt ko. polkua projektin oletushakemistona projektin luonnin yhteydessä:



Create New Project

Name:

Location:

Create Folder with Project Name